



# CRISIS HUB

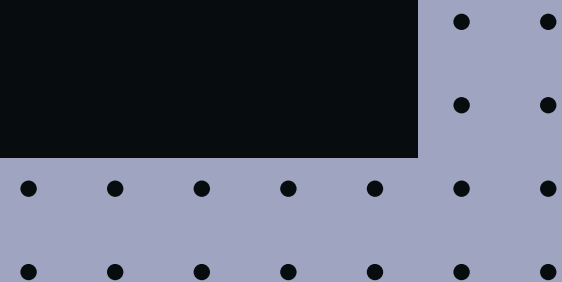


Cameron Sault  
Manager of the Crisis Hub  
Six Nations Health Services



# Agenda

- 01 Introduction
- 02 History of the Crisis Hub
- 03 Staff Roles and Responsibilities
- 04 Crisis Hub Layout
- 05 Community Crisis Committee
- 06 Crisis Committee Members



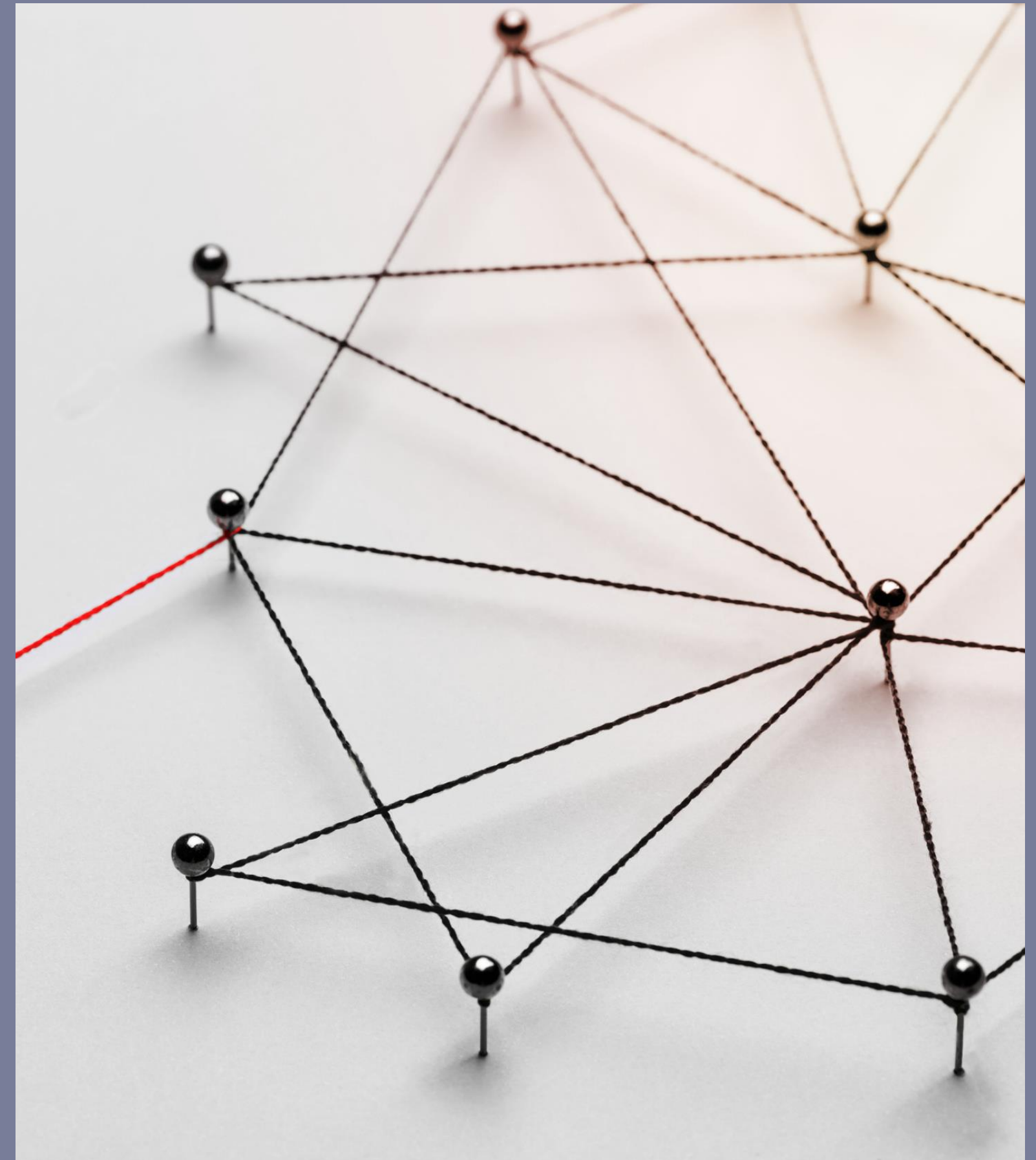


# Introduction

The Gędeŋo Community Crisis Hub is a safe space where community members can walk-in or call for crisis support. The Crisis Hub houses specialized mental wellness teams that work together to provide meaningful support to those impacted by crisis.

## Hours

Monday - Friday 8am - 11pm



# History of the Crisis Hub

**2017-  
2018**



Acquired Mental Wellness Team funding. Started with two staff members

Received funding for Mobile Crisis Rapid Response (MCRRT) Team. Moved the Concurrent and Gedeo Community Crisis Workers into the Hub.

**2019 - 2020**

**2020 - 2022**



In response to the pandemic, the COVID Assessment Centre was moved into the Hub and staff started to provide water and food supports to tackle water and food insecurity.

Started implementing more crisis response measures as a result of the pandemic. June 2022 hours of crisis hub increased from 4pm-11pm Mondays - Fridays

**2022 - Present**

# Staff Roles and Responsibilities

## Mobile Crisis Rapid Response Teams

Works collaboratively with Police to ensure crisis support and stabilization

## Gedeo Community Crisis Workers

Provides meaningful crisis response, crisis intervention, and connections to community services

## Mental Wellness & Addictions Counsellors

Provides mental wellness, addictions counselling, and support

## Concurrent Disorders Workers

Identifies concurrent disorders and implements outcome oriented treatment plans

## Intake Workers

Helps with screening and assessing needs, prioritising and making appropriate referrals

# Mobile Crisis Rapid Response Team and Six Nations Police

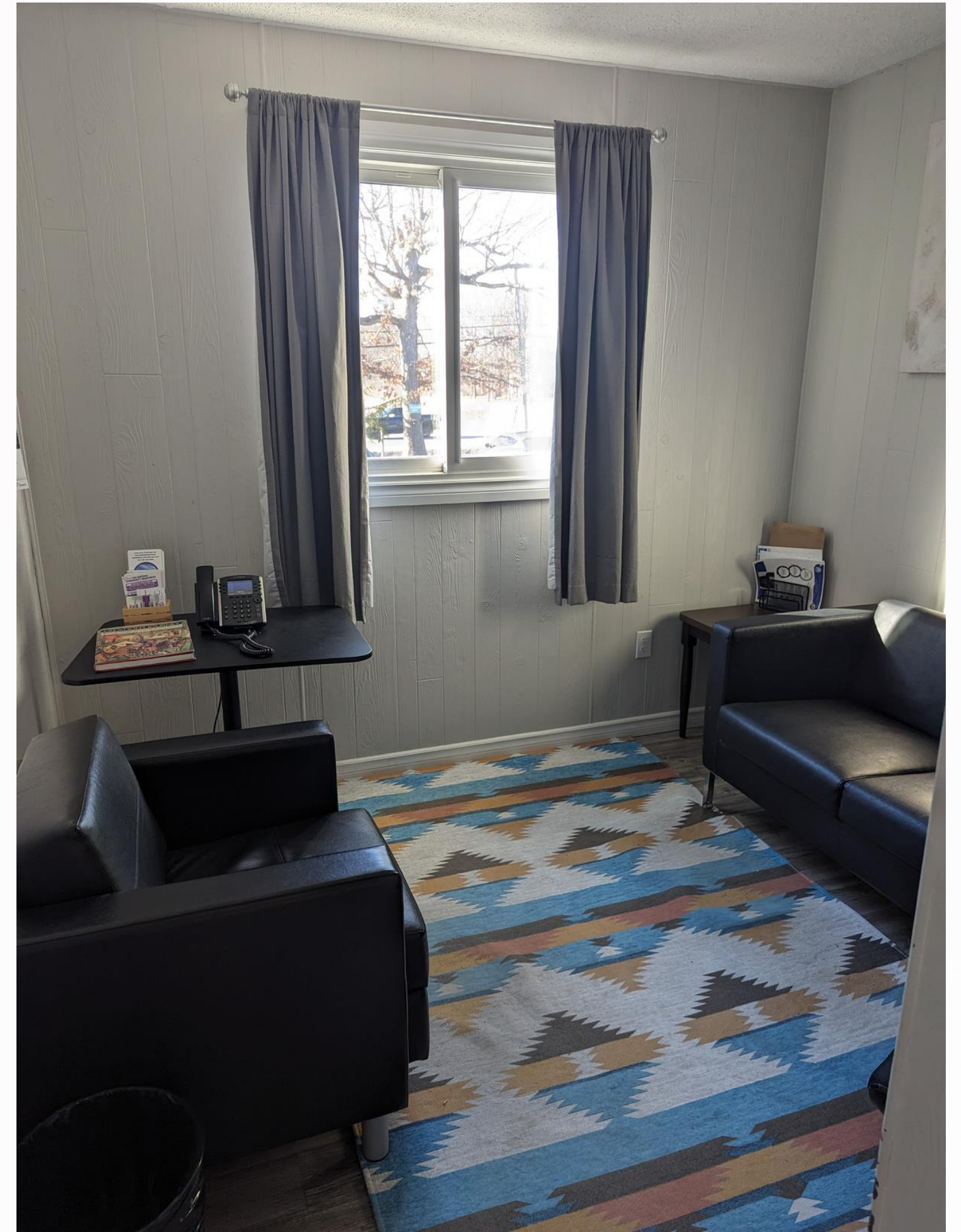
- Roles and Responsibilities
- Brief History of Collaboration
- Types of Calls
- How is MCRRT Utilized
- Follow Up on Crisis Calls and Connection to Services
- Community Member Experience





# Services and Supports at the Hub

- Walk in or telephone stabilization
- Referrals to community agencies
- Support groups including: Grief Recovery, Relapse Prevention, Wellbriety and Ohahase Treatment Program
- Connection to Traditional Services
- Safe and supportive spaces for community to access to avoid triggers





# Services and Supports at the Hub

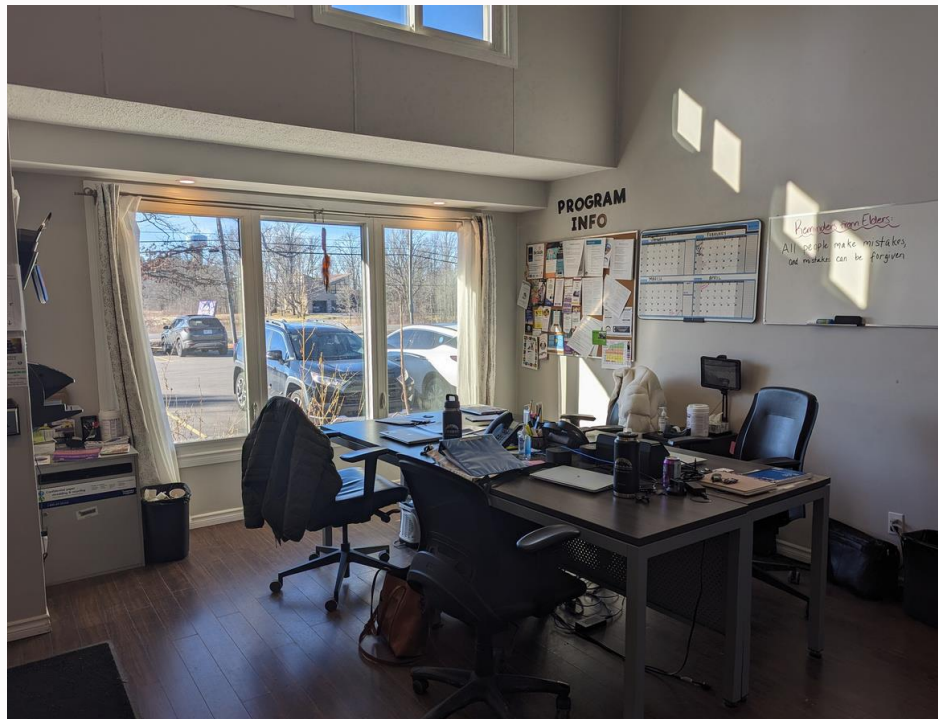
- Outreach Services
- Shower
- Laundry
- Warm meals and food provided for community members in need
- Lounge area on site for relaxing
- Harm reduction supplies
- Quite supportive spaces for grounding including a Mongolian Yurt, Greenhouse, and Gazebo





# Crisis Hub Layout

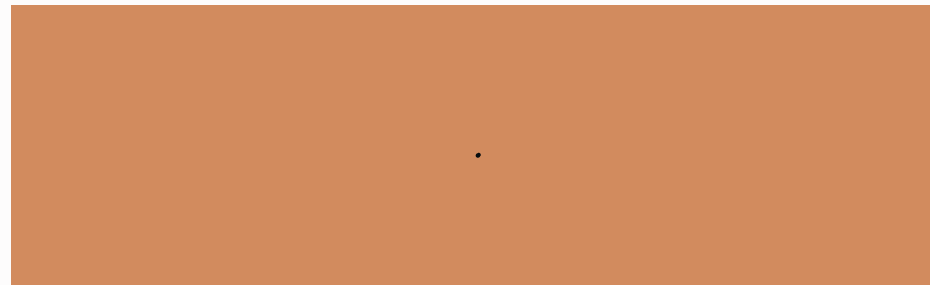
*Staff Area*



*Community Kitchen*



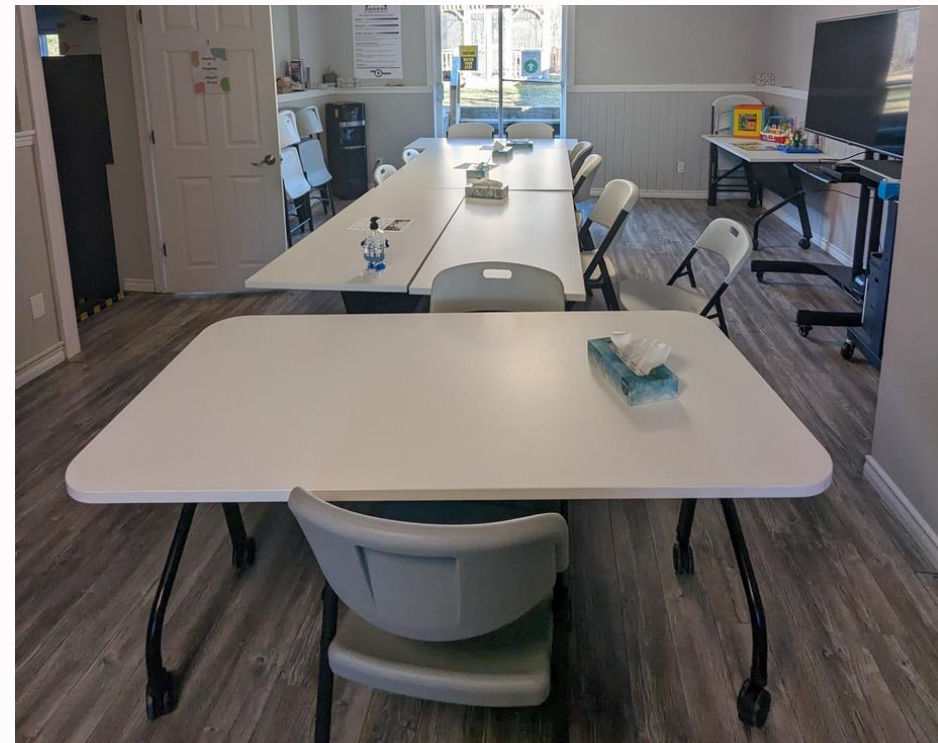
*Community Drop in Space*





# Crisis Hub Layout

*Program Room*



*Laundry and Shower Facilities*



*Outdoor Space*





# Six Nations Community Crisis Committee

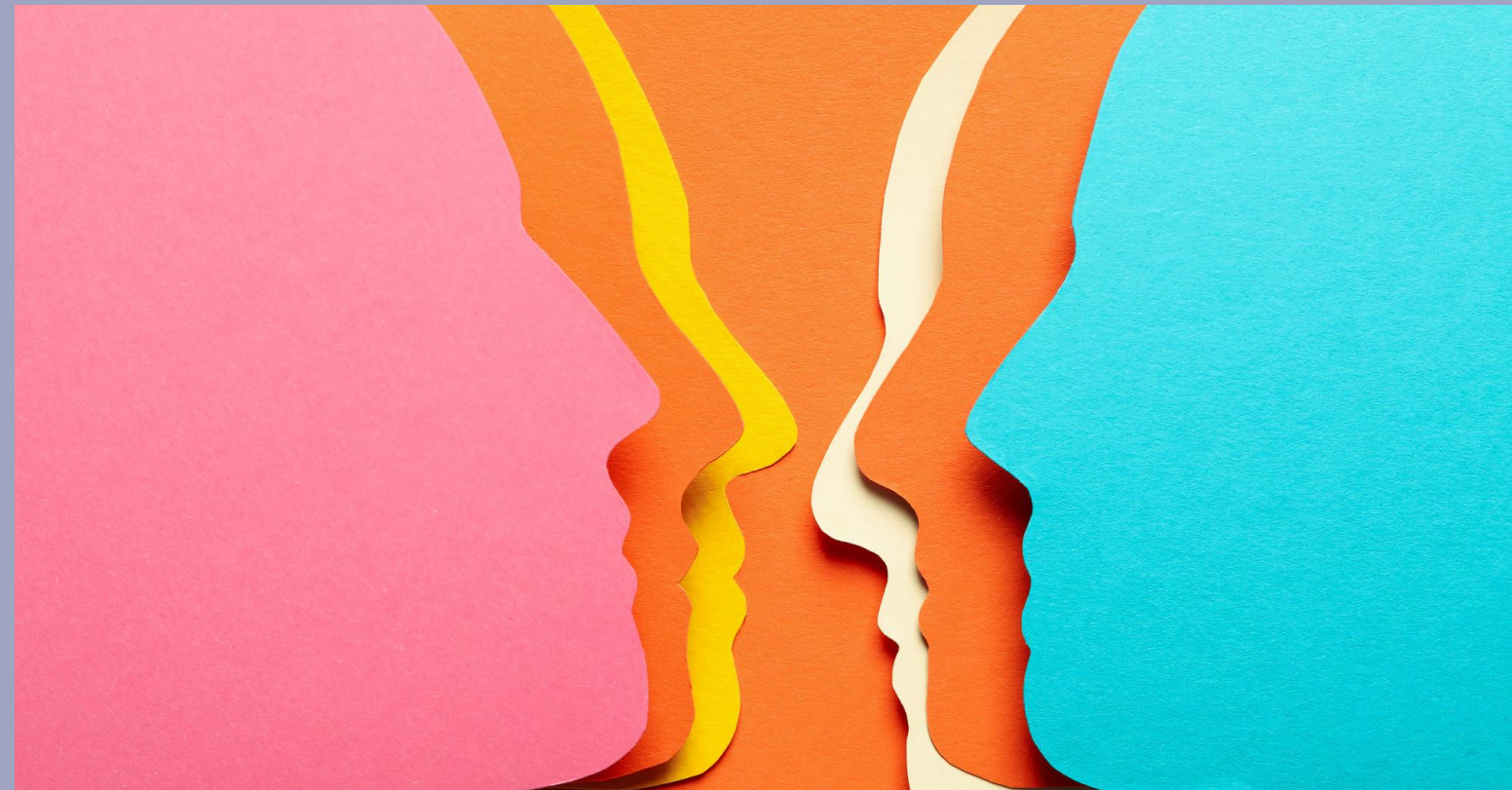
The Six Nations Community Crisis Committee, formed in response to the pandemic's impact on the community in 2021, encompasses a broad range of community agencies.

The Community Crisis Committee's strength is in fostering collaboration among different community stakeholders, leveraging local knowledge and resources, and adapts to the unique challenges presented by each crisis.



# Functions of the Six Nations Community Crisis Committee include:

- Collaboration across service sectors
- Coordination and resource management
- Timely coordination and responses to crisis situations
- Monitoring and situation analysis
- Public engagement and education





# COMMUNITY CRISIS COMMITTEE MEMBERS

- Anti-Bullying Task Force
- Child and Youth Health
- Child and Family Services
- Egowadiya'dagenha Land Based Healing
- Family Wellbeing Program

- Ganohkwasra Family Assault Services
- Justice Program
- Life Promotions
- Mental Health and Addictions
- Ontario Works
- Outreach Program

- Six Nations Housing
- Six Nations Paramedics
- Six Nations Police
- Six Nations School Board
- Youth Life Promotions Program



# NYAWEH

&

# CHI MIIGWECH

**Cameron Sault**  
**Manager of the Crisis Hub**



[csault@sixnations.ca](mailto:csault@sixnations.ca)

